

# An Invitation

## Local Consultations – Second Display

### *Future Use of the Former Weston Creek School Site*

In October 2007 a community newsletter was distributed to residents of Weston inviting them to attend an information display in relation to the options for the future use of the former Weston Creek Primary School site.

The display was well attended and included residents from the local area as well as prospective user groups.

The feedback gained from the first display has been considered by the consultant team and the next stage in the process of identifying draft recommendations for the future use of the site is currently being finalised.

The results of this work will be the subject of a second display at the Weston Creek Community Centre on Tuesday 20 November between 4:30pm and 7:30pm.

#### LOCAL COMMUNITY INVOLVEMENT

This will be the second of two community information displays at which the local community can provide input into the consideration of the future use of the Weston Creek site.

Notes of comments from the first public display held in October are available from the **formerschoolsite** web page.

#### SECOND COMMUNITY INFORMATION SESSION

The second community information session will take the form of an open display where residents may drop in at a convenient time to review the draft recommendations for the site being considered by the Consultant team.

Plans and other information will be on display and your views on the site will be appreciated.

You will also have the opportunity to discuss these draft recommendations with the Consultants.

#### Further Information

For **general information** about the consultations and sites, visit: [www.purdon.com.au/formerschoolsites](http://www.purdon.com.au/formerschoolsites)

If you require additional information please contact Purdons on 6257 1511 or email to [formerschoolsites@purdon.com.au](mailto:formerschoolsites@purdon.com.au).

#### DETAILS OF THE FIRST LOCAL CONSULTATION

**When:** Tuesday 20 November, 2007  
from 4.30 – 7.30

**Where:** Weston Creek Community Centre,  
Whitney Place Weston  
(adjoining southern car park at  
Coleman Court)

#### FEEDBACK

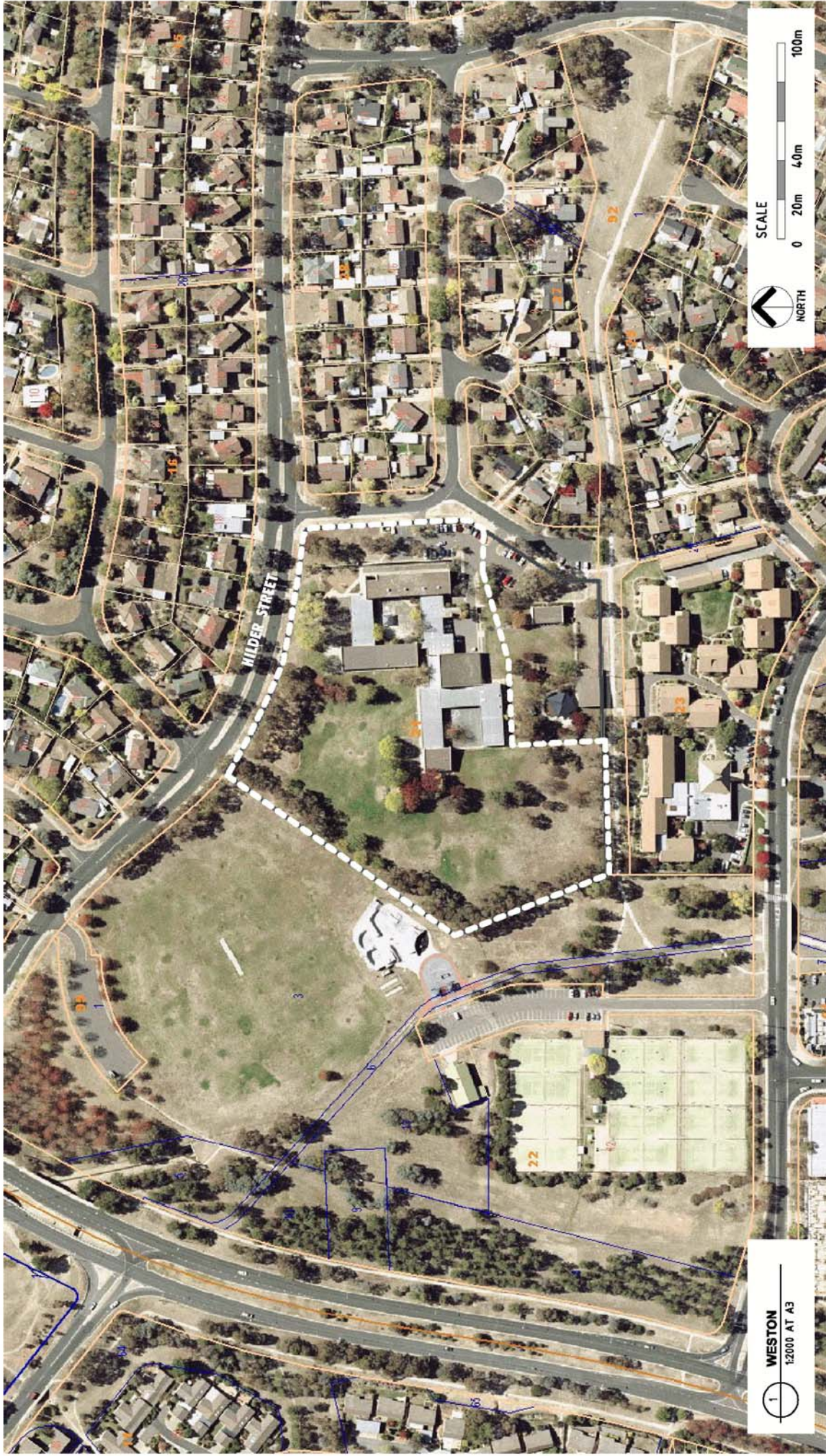
A feedback form will be provided on the night, or alternatively you may make a submission at anytime by accessing the website or emailing to the address below.

Comments and feedback will be appreciated.

#### WHAT HAPPENS FOLLOWING CONSULTATION

The consultants will make recommendations to the Government. These will be considered in early 2008.





**New Opportunities**  
 For Local Communities  
 New Uses For Former School Sites

WESTON SITE - BLOCK 1, SECTION 21

