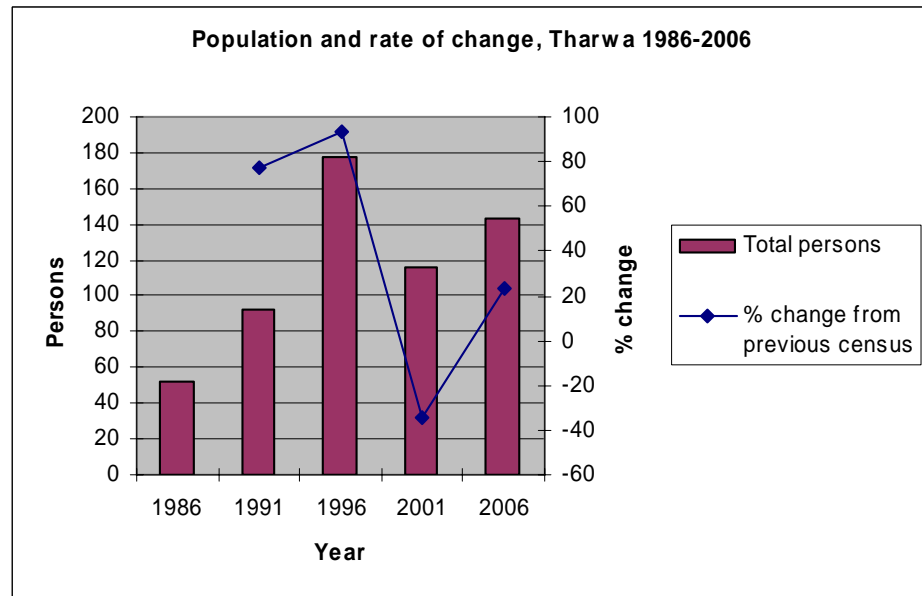
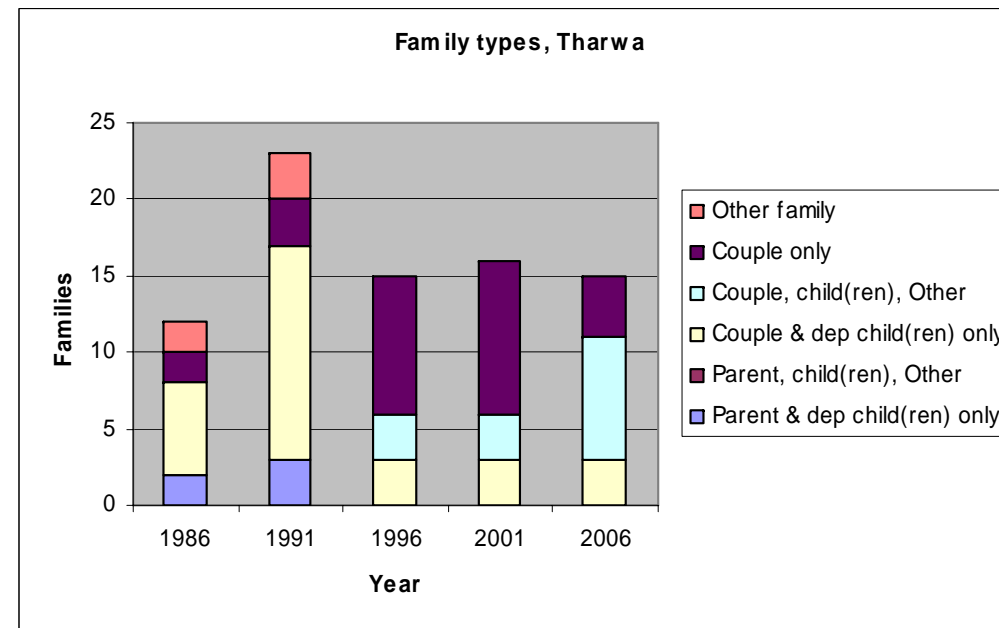


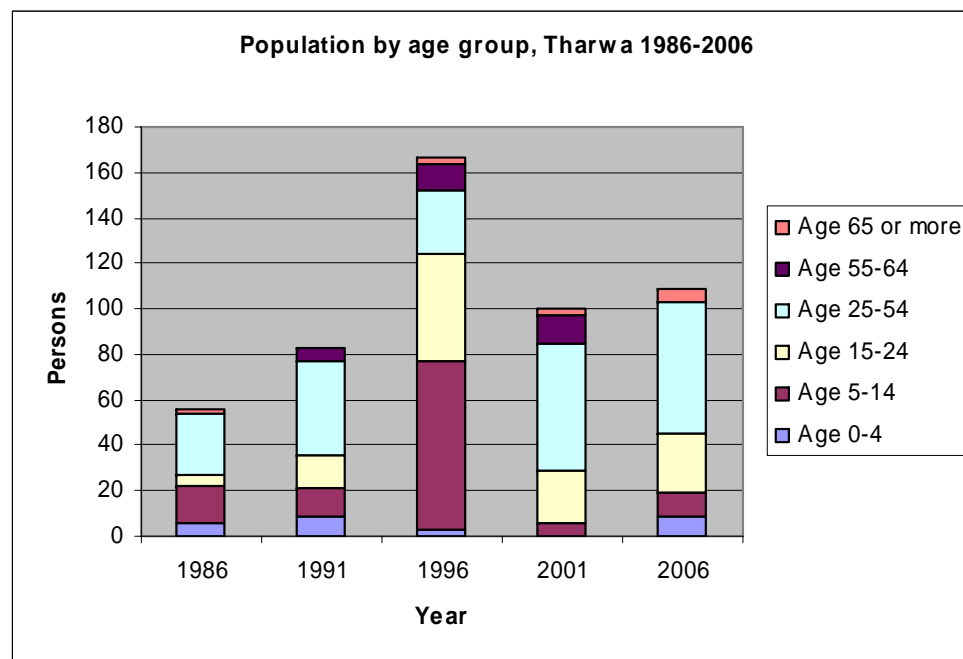
Population Characteristics –Tharwa Census Collector’s District (CCD)



The population of this small area of Tharwa has fluctuated considerably at each of the last 5 census years, with a large increase between 1991 and 2006, a large decline and recent growth. Rates of change reflect, in part, the small sample size of the area, where the loss or gain of a few large families can have a large impact on numbers.

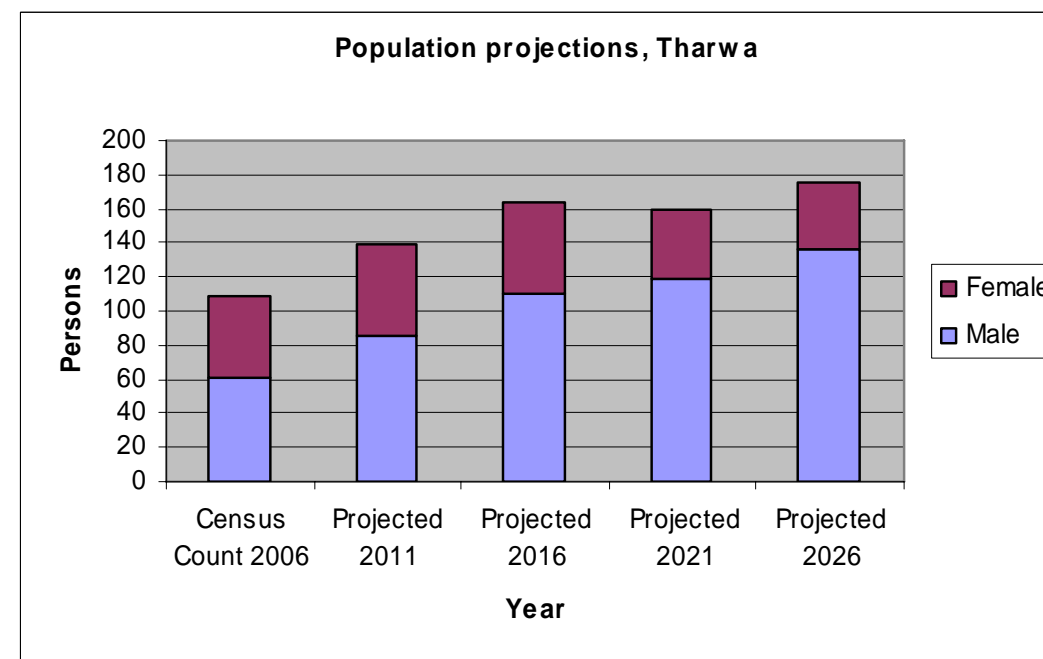


This graph presents data on family types for Tharwa since 1986. However, because of the small sample sizes (typically <4) in each category, the data from ABS is randomised and hence is unreliable and does not measure the actual breakdown for this small area.



The composition of age groups has also varied significantly at each of the last five census years and appears to reflect movements of households into and out of the area, some ageing of an established population and data adjustments (randomisation) for confidentiality purposes (see **Note** adjacent).

Although 1996 appears atypical, there is a general decline over this period in the proportion of the population aged 0-4 and 5-14 years, from 42% of the population in 1986, 23% in 1991 and 13% in 2006. The size of the population aged 15-25 years has been gradually increasing.



Note: This area is far too small to make population projections based on recent movements, particularly as source data is greatly affected by the Australian Bureau of Statistics' randomisation practices (for reasons of confidentiality). Projections based on expectations of dwelling construction coupled with average occupancy rates may be a more effective predictive method.

Net migration from the area appears to be virtually zero, but will be substantially influenced by such small movements from year to year. The population seems likely to remain static.