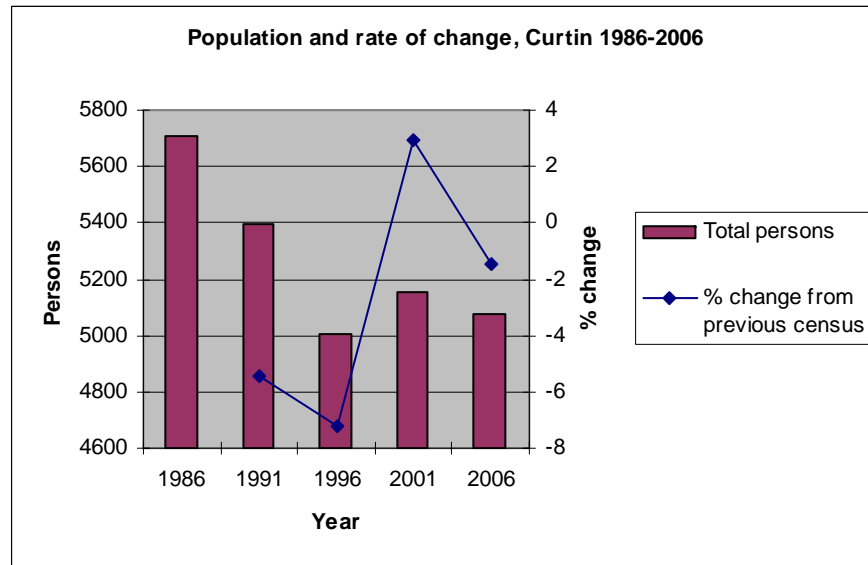
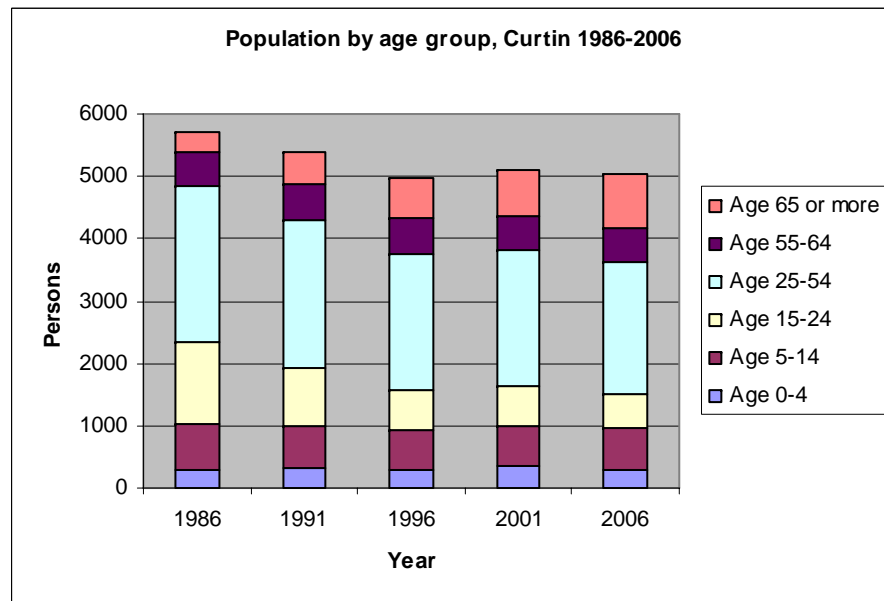


# Population Characteristics – Suburb of Curtin

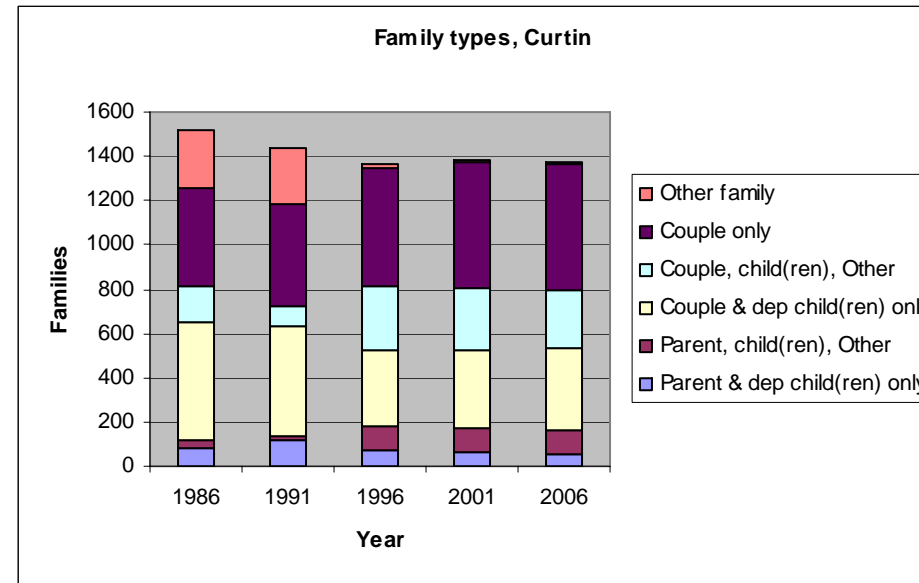


The population of Curtin declined by 11% between 1986 and 2006, from 5,706 to 5,074. During this same period, the population of the ACT increased by around 30%. After declining to its lowest point of 5,004 in 1996, the population grew slightly to 5,154 in 2001 before declining again in 2006 to 5,074.

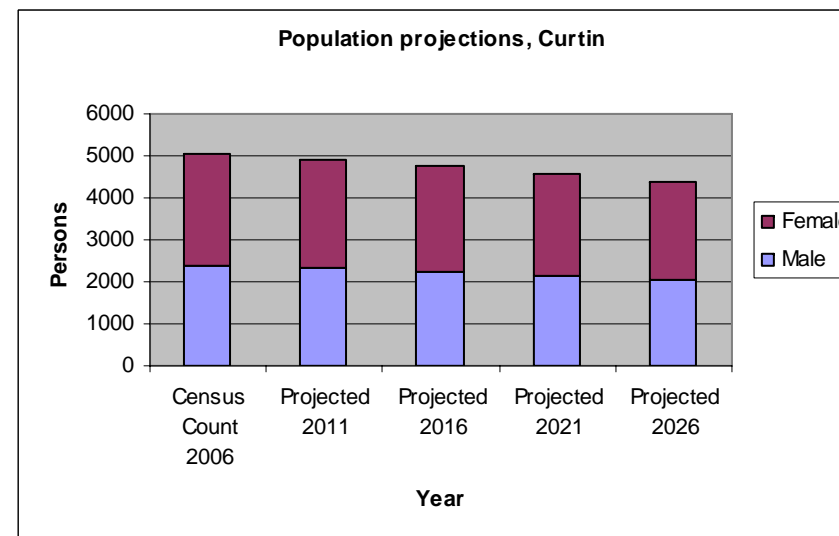


The population in the 0-4, 5-14 and 25-54 year age groups all appear to have been relatively stable since 1986. The graph shows a marked decline in those aged 15-24, with the population of this age group more than halving from 1,333 in 1986 to 562 in 2006. The proportion of the population in this age group has fallen from 23.4% in 1986 to 11.1% in 2006.

At the same time, the proportion of the population aged over 55 years has increased from 15% to 27.5% of the total population.



Data on family types reflect many changes over time and definitional changes. The proportion of 'Couple families with dependent children only' has declined by 8.5%, from being 34.9% in 1986 to 26.4% in 2006. The number of 'single parent with dependent children only' has also seen a slight decrease in this time. At the same time, families with older children have increased markedly. 'Couple only families have increased from 29.2% to 41.2% of total families over this timeframe.



Population change in Curtin has been marked by an essentially declining population over the last 20 years. The population rose slightly in 2001, but has since returned to pre-existing levels. Population decline has been most prominent in the 15-24 age group. The future population seems likely to continue falling. The effect is expected to be shared amongst the age cohorts.