

Local Consultations – An Invitation

Future Use of the Former Melrose Primary School Site

As part of the ACT Government's *Schools Revitalisation Policy*, 23 schools and preschools either closed at the end of 2006 or are to be closed over the next two years. The Government is consulting with the community about the future use of 16 of these former schools and preschools located on 13 sites. It is also consulting on the former North Curtin and Downer primary school sites that were closed several years ago.

The Government has commissioned a team led by Purdon Associates to undertake the community consultations and to make recommendations on the future use of the sites.

Input from the community will help decide the best future uses for these valuable resources.

LOCAL COMMUNITY INVOLVEMENT

There will be two main opportunities for local community input into the consideration of the future use of the Melrose (Chifley) site. This newsletter provides information about the first of these.

LOCAL CONSULTATION 1

There are two ways you can be involved in the first local consultation:

- attend the community information session
- participate in a workshop

COMMUNITY INFORMATION SESSION

The community information session will take the form of an open display where residents may drop-in at a convenient time to review the available information, speak to the consultants about the site and provide comments and feedback.

YOU DO NOT NEED TO REGISTER FOR THE INFORMATION SESSION

LOCAL WORKSHOPS

The workshops will be held concurrently with the first Community Information Session.

Each workshop will run for 45mins. They will provide an opportunity for group discussion about the future use of the site.

YOU NEED TO REGISTER FOR THE WORKSHOPS

Further Information

For **general information** about the consultations and sites, visit: www.purdon.com.au/formerschoolsites

Register for the workshops visit: www.purdon.com.au/formerschoolsites or email formerschoolsites@purdon.com.au or phone 6257 1511.

Apply for community space: register with the Department of Territory and Municipal Services (TAMS) at www.tams.act.gov.au/work/property_group.

ADVANCE NOTICE OF SECOND INFORMATION SESSION – Tuesday 27 November in the same venue. A separate newsletter will be distributed providing details.

DETAILS OF THE LOCAL CONSULTATIONS

When: Tuesday 30 October
Where: Woden Senior Citizens Hall, Cnr Melrose Drive and Corinna St Phillip (Woden Town Centre)

TIME OF THE LOCAL CONSULTATIONS

Information Session: from 4.00pm to 7.15pm
Workshops: 4.30pm, 5.30pm, 6.30pm and 7.30pm

REGISTRATION FOR THE LOCAL WORKSHOPS

Registration for the workshops is essential because of space restrictions.

Register for a Workshop at:

www.purdon.com.au/formerschoolsites

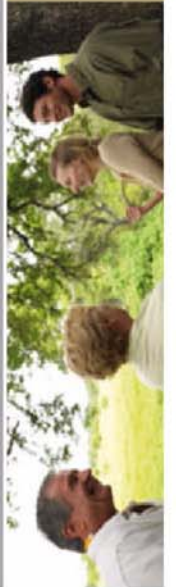
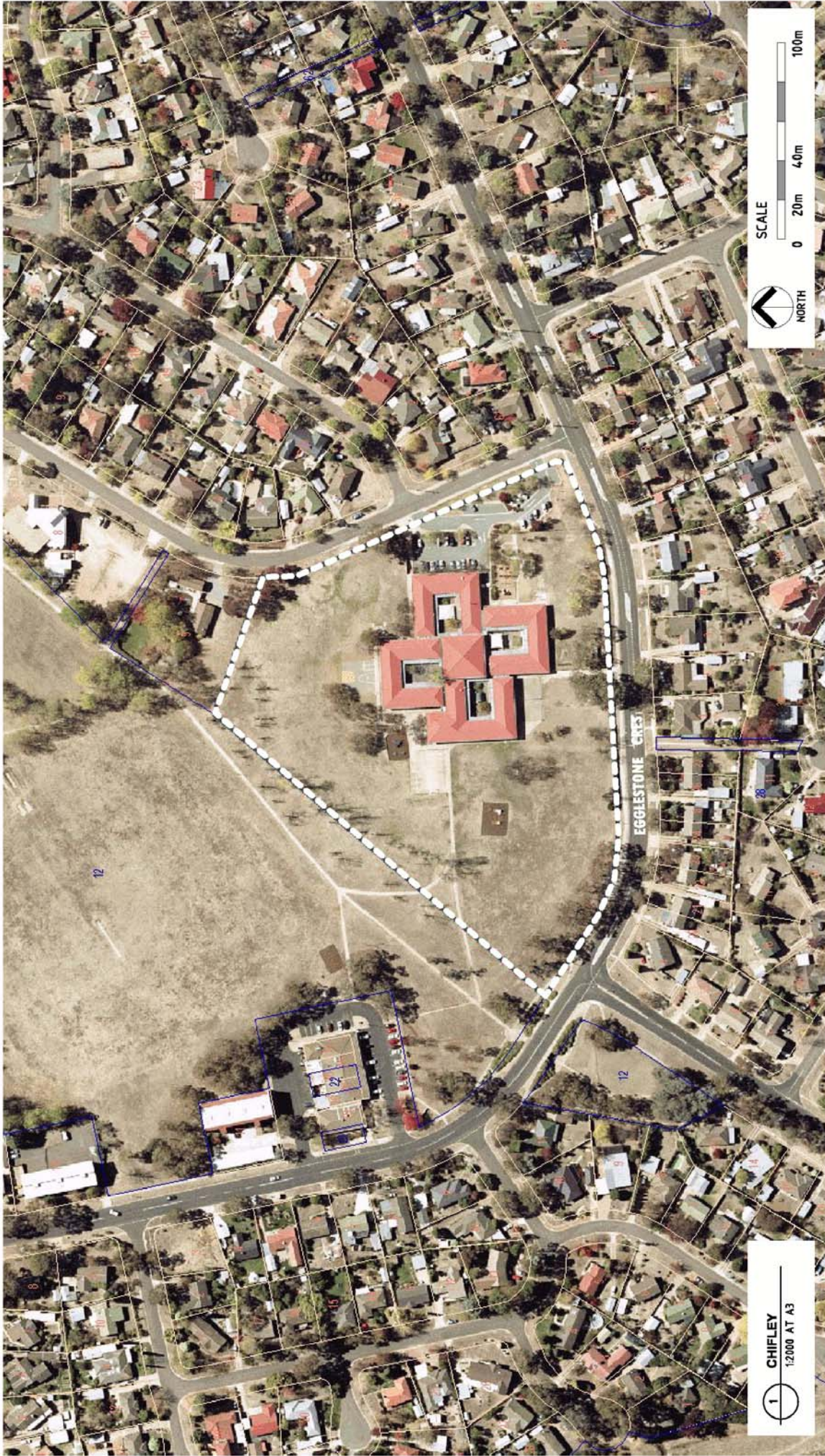
Email: formerschoolsites@purdon.com.au

Phone: 6257 1511

WHAT HAPPENS FOLLOWING CONSULTATION

The consultants will make recommendations to the Government. These will be considered by the ACT Government in early 2008.





CHIFLEY SITE - BLOCK 10, SECTION 7

New Opportunities
For Local Communities
New Uses For Former School Sites