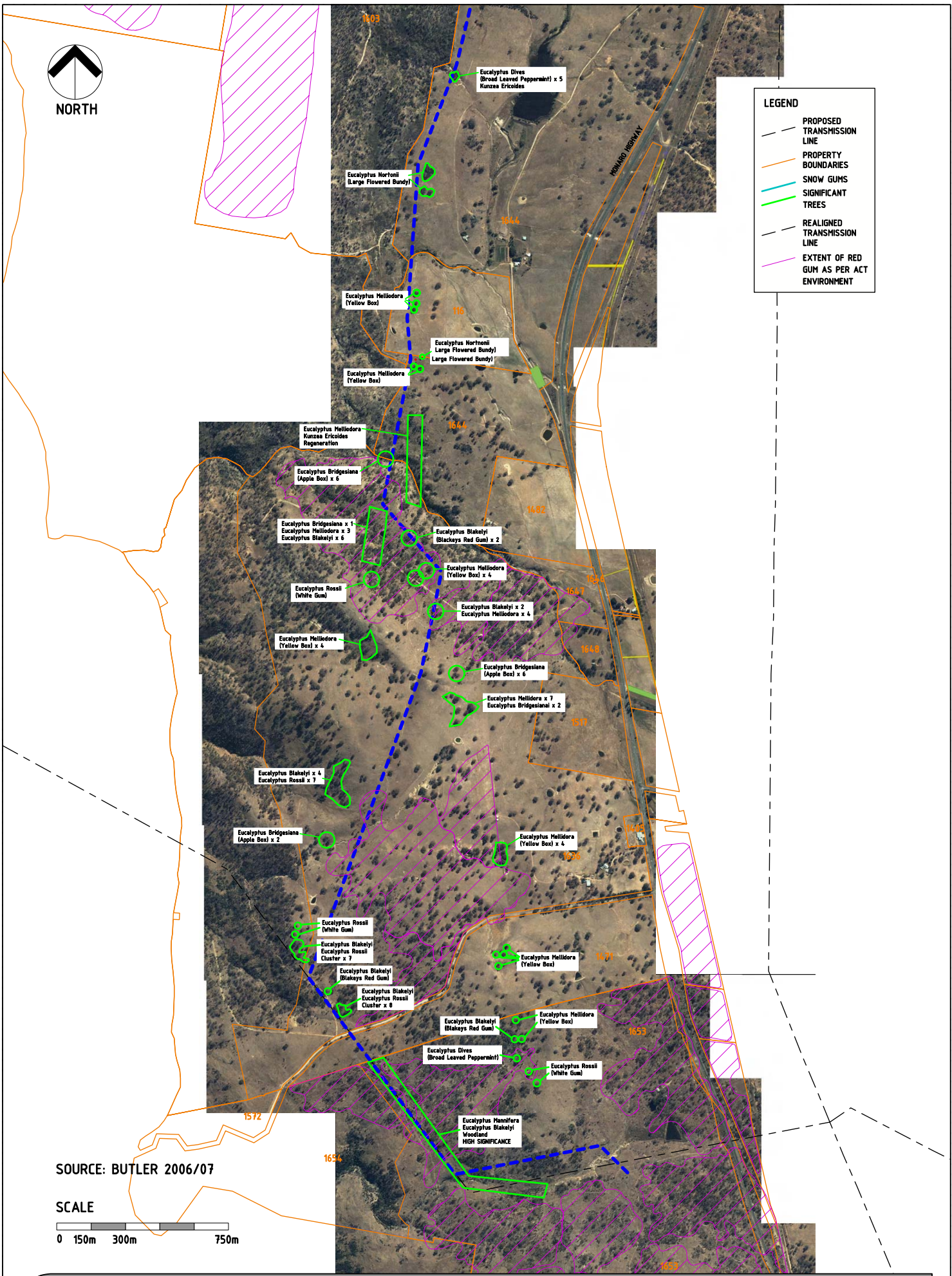
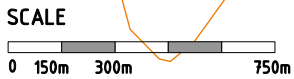




- LEGEND**
- PROPOSED TRANSMISSION LINE
 - PROPERTY BOUNDARIES
 - SNOW GUMS
 - SIGNIFICANT TREES
 - REALIGNED TRANSMISSION LINE
 - EXTENT OF RED GUM AS PER ACT ENVIRONMENT



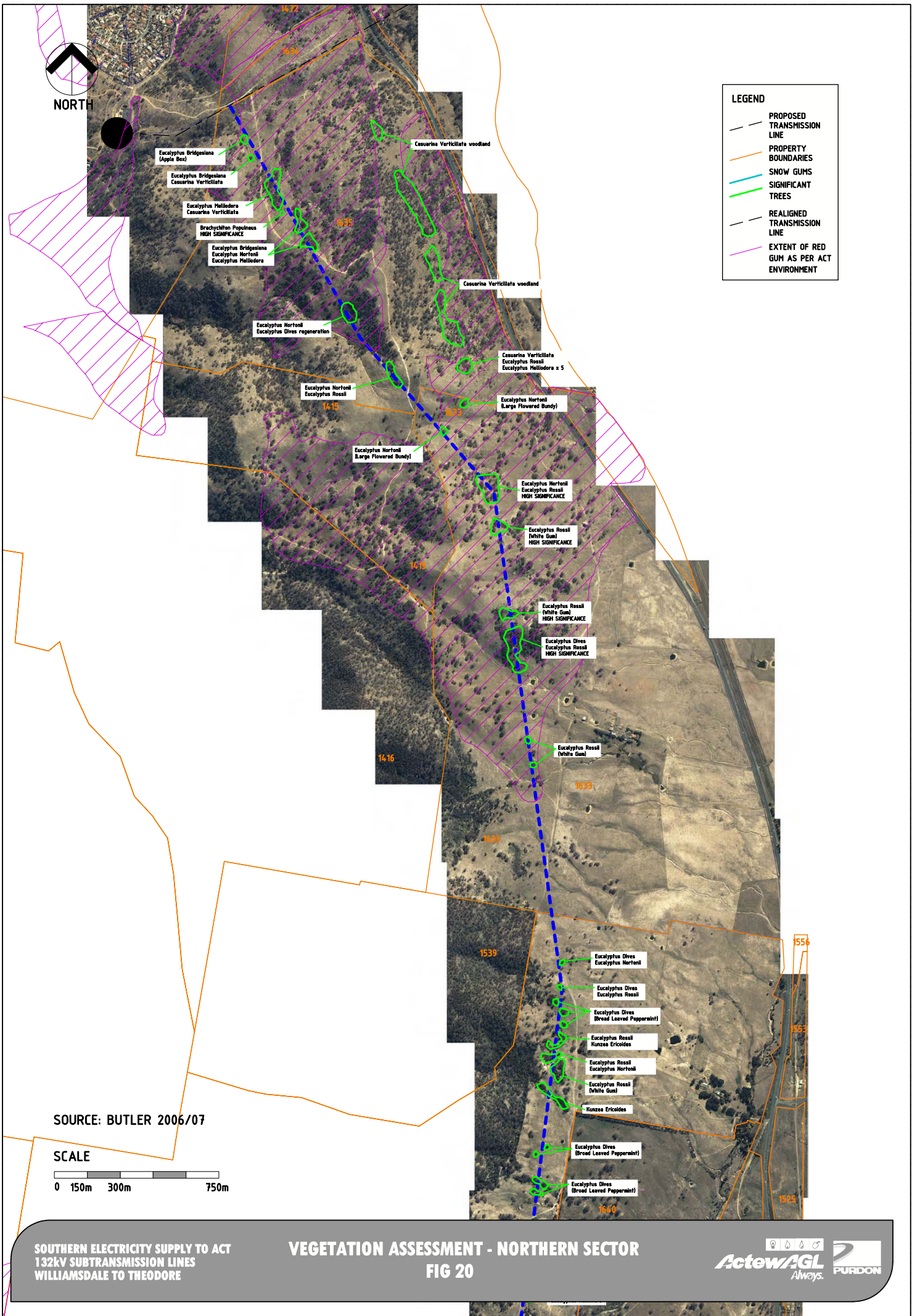
SOURCE: BUTLER 2006/07



**SOUTHERN ELECTRICITY SUPPLY TO ACT
132kV SUBTRANSMISSION LINES
WILLIAMSDALE TO THEODORE**

**VEGETATION ASSESSMENT - SOUTHERN SECTOR
FIG 18**



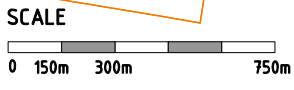


LEGEND

- PROPOSED TRANSMISSION LINE
- PROPERTY BOUNDARIES
- SNOW GUMS
- SIGNIFICANT TREES
- REALIGNED TRANSMISSION LINE
- EXTENT OF RED GUM AS PER ACT ENVIRONMENT



SOURCE: BUTLER 2006/07



SOUTHERN ELECTRICITY SUPPLY TO ACT
132kV SUBTRANSMISSION LINES
WILLIAMSDALE TO THEODORE

VEGETATION ASSESSMENT - NORTHERN SECTOR
FIG 20

